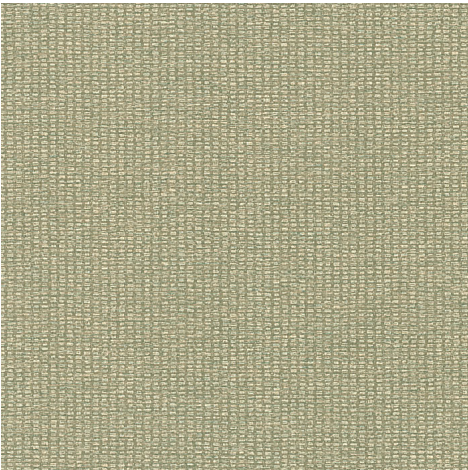




These nubby textile coordinates are the perfect solution for either new construction or renovation projects. Their subtle light reflectance quality provides visual interest and the dimensional embossing provides a cost effective answer for your problem walls. Practical colors in this palette allow Kia and Kia Stripe to be used in a multitude of interiors. These coordinates are 21 oz. Type II in-stock patterns. Price Code J



KIA - Dune

- Pattern Color: Dune
- Type: II
- Weight: 21
- Width: 54
- Pattern #: USV2-KIA-06
- Repeat: N/A
- Random: YES
- Reversible: YES
- Packaging: 50 LY
- Backing: SCRIM
- Embossing: BURLAP
- Ratings: CLASS A, ASTM-E84
- Certifications: CAL1350 LOW VOC
- Price Code: J