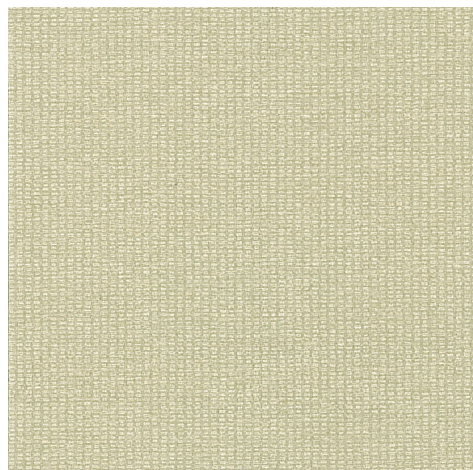




These nubby textile coordinates are the perfect solution for either new construction or renovation projects. Their subtle light reflectance quality provides visual interest and the dimensional embossing provides a cost effective answer for your problem walls. Practical colors in this palette allow Kia and Kia Stripe to be used in a multitude of interiors. These coordinates are 21 oz. Type II in-stock patterns. Price Code J



KIA - Straw

Pattern Color: Straw

Type: II

Weight: 21

Width: 54

Pattern #: USV2-KIA-05

Repeat: N/A

Random: YES

Reversible: YES

Packaging: 50 LY

Backing: SCRIM

Embossing: BURLAP

Ratings: CLASS A, ASTM-E84

Certifications: CAL1350 LOW VOC

Price Code: J