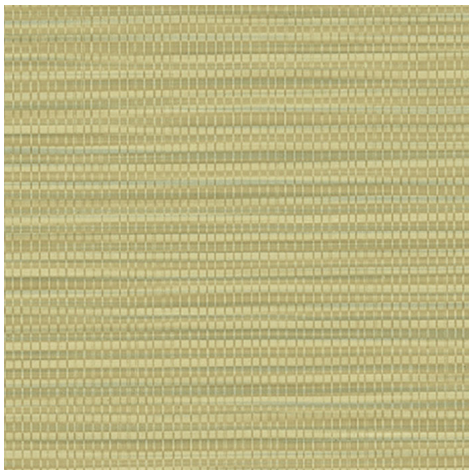




With a refined, raw silk texture with line drawn companion co-ordinate, Tessa and Tessa Silk offer suite application solutions for your hospitality, health care and corporate projects. Both of these designs are offered in 13 carefully researched colors and are Type I in-stock patterns. Price Code D



TESSA SILK - Picholine

Pattern Color: Picholine

Type: I

Weight: 15

Width: 54

Pattern #: USV1-TSS-06

Repeat: N/A

Random: YES

Reversible: YES

Packaging: 50 LY

Backing: SCRIM

Embossing: TAPESTRY

Ratings: CLASS A, ASTM-E84

Certifications: CAL1350 LOW VOC

Price Code: D